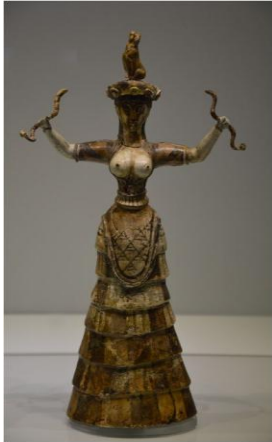


# One but many. The concept of the Great Mothes Goddess in the study of the Minoan religious system in the Bronze Age.



The Mother Earth

- source of new life,
- incarnation,
- mother of the mankind,
- renewed vegetation,
- promoted the growth



”meta-narratives” record

1. no archeological record
2. feminist movement
3. no social changes?

1. myriad female **figurines**
2. Great Mother Goddess
3. all-powerful female deity

## Figurines:

- availability,
- universality,
- mobility,
- range,
- spectrum

## Context:

- caves,
- peak sanctuaries,
- palaces,
- settlements

## Features:

- form,
- schape,
- decoration,
- chronology/topography



- the Mistress of Animals,
- the Goddess of Fertility,
- the Mother of Nature,
- the Snake Goddess (source of divine power and the kingship),
- the Bird Goddess

